



**MACHINES...
START TALKING!**

BlueTree 6000 Series

The BT-6600 series offers high speed internet connectivity over the EVDO Rev. A cellular network to M2M applications for real-time remote access, monitoring and control of remote devices.

By combining standard device interfaces with BlueTree's powerful internet connection management, the BT-6600 adds "intelligence" to any machine-to-machine solution, thus providing reliable communication to business assets.

- RTU/PLC/SCADA for data collection, monitoring & control
- Traffic control & monitoring
- Surveillance & alarm panels
- POS, ATM, Kiosk
- Waste water management

Telemetry / SCADA

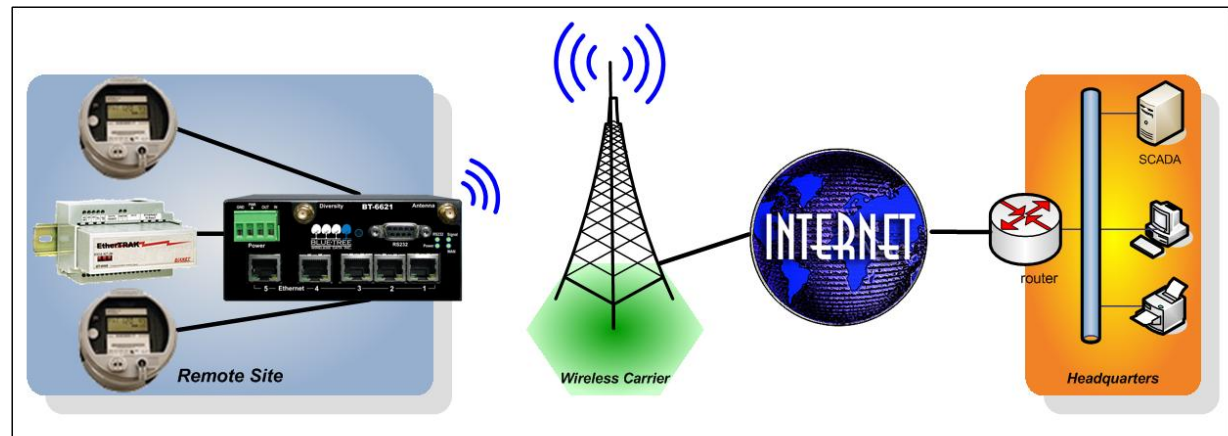
Benefits

- ▶ Provides industry standard internet TCP/IP access to remote devices
- ▶ Provides real-time readings for better usage and billing management
- ▶ Optimizes the use of businesses assets
- ▶ Reduces visits to remote locations resulting in lower employee resources
- ▶ Connect multiple devices to a single WAN pipe
- ▶ Ideal for hazardous environments
- ▶ Compared to traditional wire line:
 - Simpler installation results in lower setup cost & faster deployment
 - Lower monthly charges (paid based on data usage)
 - Larger geographical coverage
 - Native TCP/IP connectivity



Features

- ▶ Ultra-reliable Always-on cellular link
- ▶ EVDO Rev. A speeds of up to 3.1 Mbps
- ▶ Rugged and compact DIN rail mounting
- ▶ Multiple interfaces: Ethernet, USB, Serial
- ▶ Remote diagnostics, configuration & updates
- ▶ Router and IP Pass-through modes
- ▶ 5 Ethernet embedded switch option
- ▶ Serial IP server with MODBUS/DNP3 support
- ▶ Power over Ethernet
- ▶ -40 to +75°C (-40 to 167°F)



Simple. Reliable. Wireless modems.

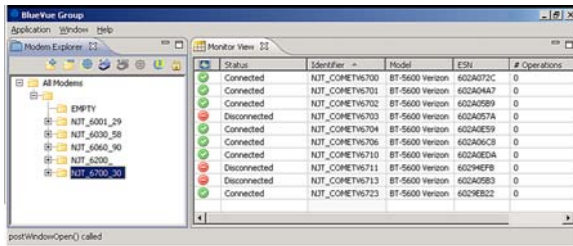
Telemetry / SCADA

Software Tools

The BlueTree 6600 can easily be configured, monitored and managed using the following BlueVue software applications.



BlueVue Device Manager
For initial setup and configuration



BlueVue Group
Enterprise application for remote monitoring and management of deployed modems



BlueVue Monitor
Quick and easy diagnostic dashboard

Product Specifications

Wireless Interface	Dual-band CDMA2000 EVDO Rev. A (with diversity) Backward compatible with 1xRTT and IS95
Peak Data Rates	Forward link (download): 3.1 Mbps, Reverse link (upload): 1.8 Mbps
Ethernet Interface	1x RJ45 Ethernet 10/100 auto-sensing (BT-6601, BT-6601EB) 5x RJ45 Ethernet 10/100 auto-sensing (BT-6621)
Serial Interface	1x RS-232 Serial DB9 115200bps
USB Interface	1x USB2.0 mini
LED Status Indicators	Power, WAN, Signal, RS232, Ethernet Link & Activity
Inputs & Outputs	1x Reset Button, 1x Digital Output, 1x Digital Input
Dimensions	BT-6601/6601EB: Steel 120 x 96 x 32 mm (4.7" x 3.77" x 1.25"), 453g (1 lb) BT-6621: Steel 120 x 96 x 51 mm (4.7" x 3.77" x 2.0"), 500g (1.1 lbs)
Power Input	8 - 30 Vdc (12Vdc nominal), Power over Ethernet on BT-6601EB
Power Consumption	@ 12 Vdc Transmit: 155 mA average (Max. 443 mA), Standby: 55 mA
Environmental	Operating Temp: -40 to +75°C (-40 to 167°F) Shock: IEC68-2-27, Vibration: IEC68-2-6 Humidity: 5 to 95% non-condensing
Certification	EMC- FCC, part 15 and Industry Canada, ICES-003 Hazardous Locations - Class I, Div. 2, Groups A,B,C,D, UL1604 Electrical Safety - UL508/CSA22.2/14 (CUL)



BT-6601



BT-6601EB



BT-6621

Why Choose BlueTree?

Both BlueTree and its parent company SIXNET, a leader in the automation industry for over thirty years, have a strong footprint in the manufacture of rugged modem products used in harsh fixed, mobile, industrial, commercial and military applications. BlueTree and SIXNET continually integrate their respective technologies into powerful cellular modem products in support of the M2M market. BlueTree is committed to generating technology benefits for its customers, and will continually work to develop next generation modem products to fulfill market demand. Whether you are a long standing customer or looking at BlueTree for the first time, our modems are designed with you in mind. Imagine the possibilities!"

BlueTree Wireless Data Inc. is a leading developer and manufacturer of wireless modems and software solutions for commercial and industrial applications. Blue Tree Wireless' modems are designed to operate on cellular data networks worldwide enabling M2M applications in the Public Safety, Fleet Management, Field Service, SCADA and telemetry markets. BlueTree Wireless Data Inc. is a division of SIXNET, LLC.



Canada:: 2425 46th Avenue
Montréal, Québec H8T 3C9
T :: 514 422 9110 F :: 514 422 3338

United States :: 30111 Settle Chapel Hill
North Carolina 27517 T :: 919 928 8033

Email: sales@bluetreewireless.com

